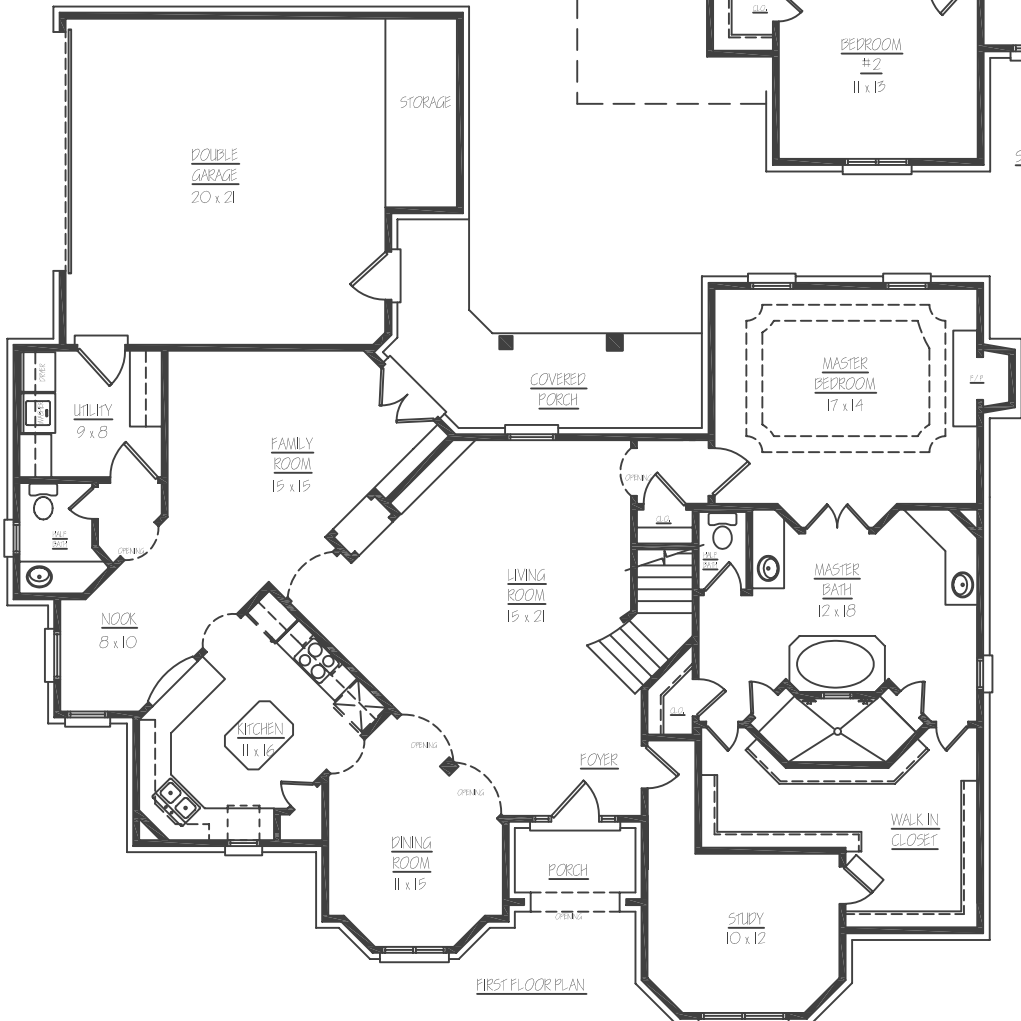
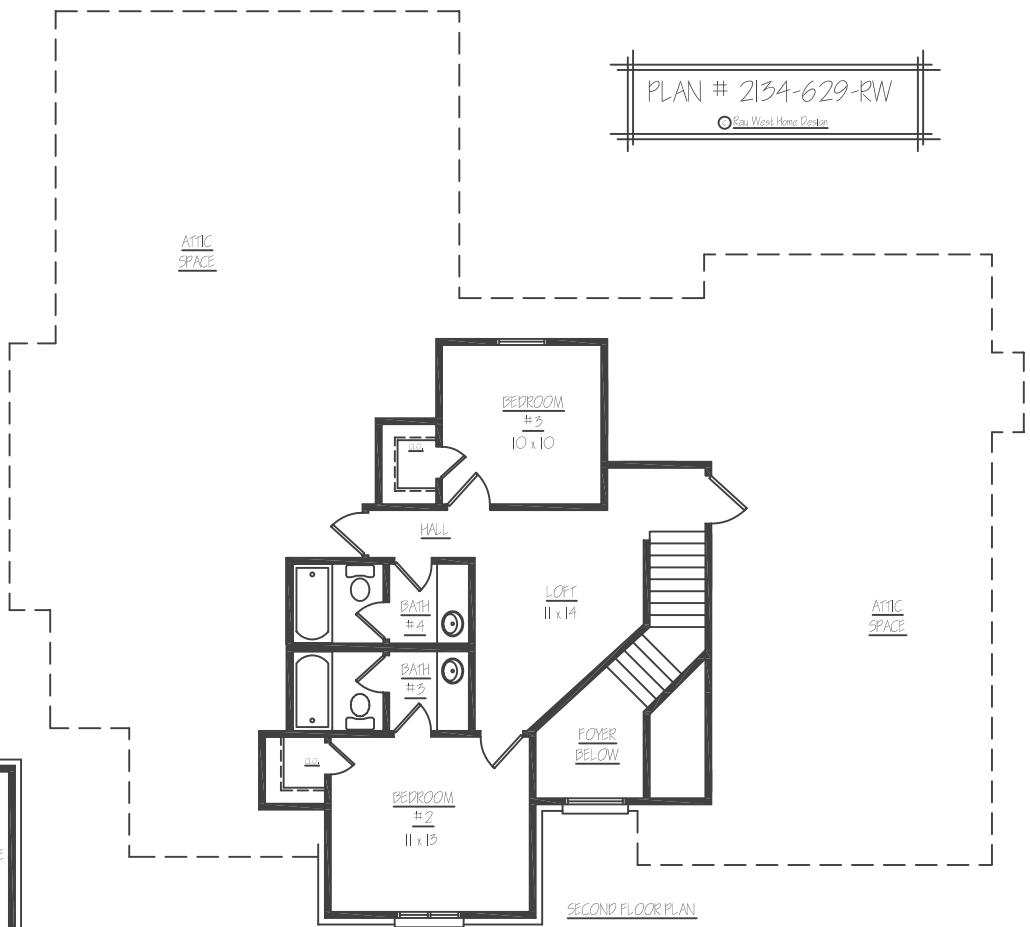




PLAN # 2134-629-RW
 Ray West Home Design



SQUARE FOOTAGE
 2134 Sq. Ft. HEATED DOWN
 629 Sq. Ft. HEATED UP
 519 Sq. Ft. GARAGE & STOR.
 173 Sq. Ft. PORCH
 2763 Sq. Ft. TOTAL HEATED
 692 Sq. Ft. TOTAL UNHEATED
 3403 Sq. Ft. TOTAL UNDER ROOF